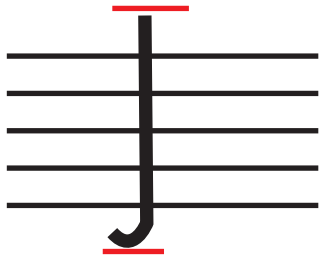


Two Main Clefs

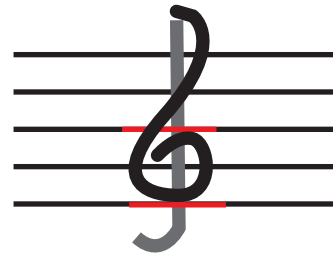


This is a treble clef. Treble means that the notes are high. It usually is found on the top staff of a Grand Staff. The treble clef is in charge of where the note 'G' is found on the staff. A long time ago, it used to be a big, cursive G.

To draw a treble clef, make a long 'J' that starts about one line above the staff and ends about one line below.



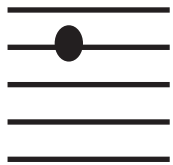
Next, make a backwards 'S' that curls at the bottom, making sure you stay inside the bottom three lines.



The middle of the curl is where 'G' is.



This is a bass clef. Bass means that the notes are low. It usually is found on the lower staff of a Grand Staff. The bass clef is in charge of where the note 'F' is found on the staff. A long time ago, it used to be a big, cursive F.



To draw a bass clef, draw a big dot on line 4. This marks where 'F' is. The dot is smaller than a note head.



Next, draw half a heart from the dot to space 1. Make sure you stay in the staff on top.



Finish with 2 little dots on both sides of line 4.

